



# COMPANY PROFILE

## 2019

**VNK VENTURES SDN.BHD**

D7-3A-2, Bangunan Perdagangan D7, 800  
Jalan Sentul, 51000 Sentul, Kuala Lumpur

# COMPANY OVERVIEW

VNK Ventures is a professional IT & telecommunication service provider being founded as a start-up venture in May 2014. VNK Ventures owns capital equity of MYR 1,000,000. We are registered for major telecommunication and IT companies as YTL, Maxis, Samsung, HP, MDE, Nokia and more.

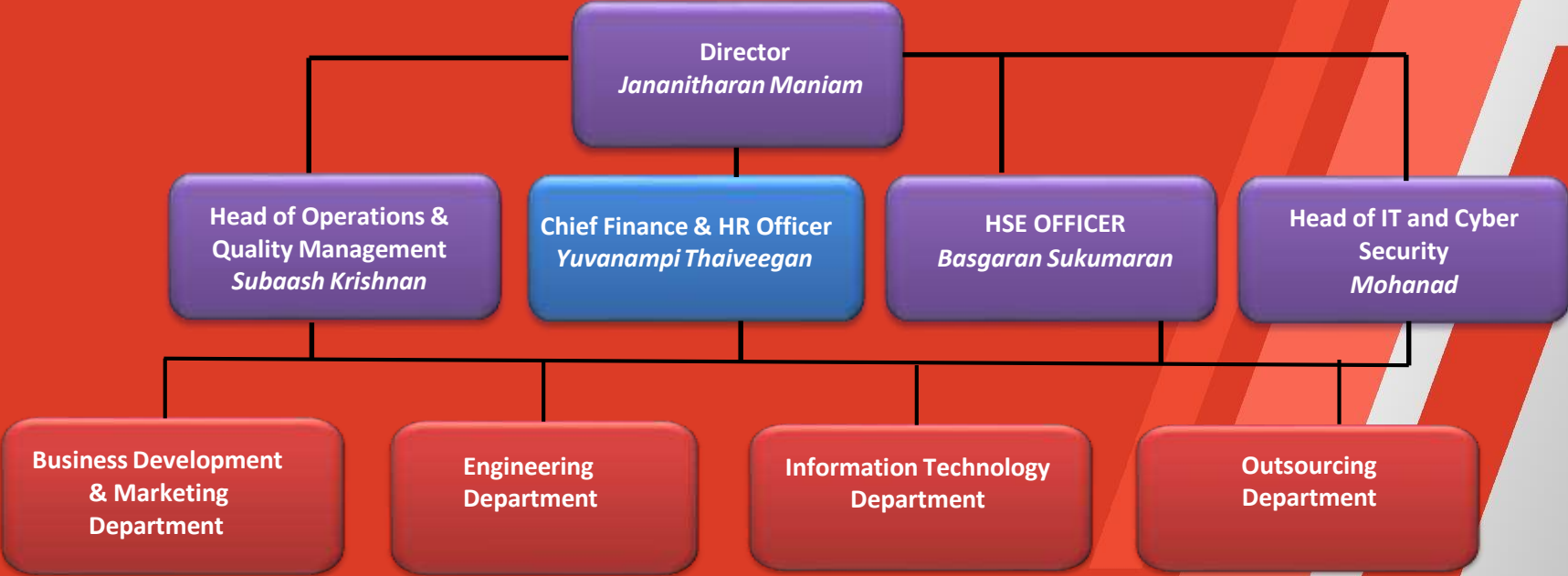


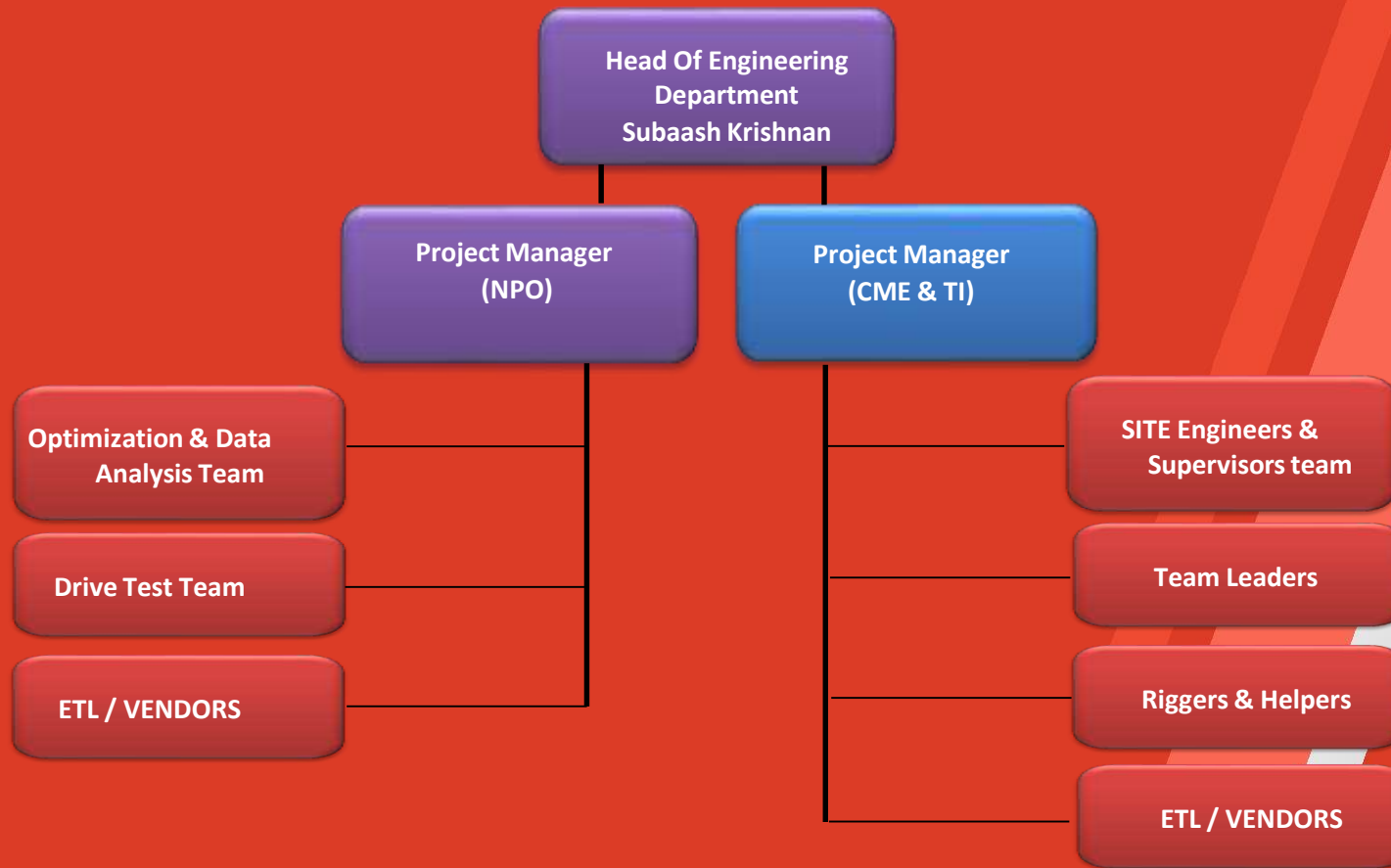
## OUR VISION

The company strongly desires to be one of the highly skilled and professional organization that best understand and deliver the requirements and needs of the clients.

## OUR MISSION 2019

The company would like to expand its resources to continuously deliver, maintain the work quality and meet the expectations of the clients. Looking forward to work directly with all major vendors and operators in Malaysia.





# SAFETY COMPLIANCE - CIDB (G7)



## PERAKUAN PENDAFTARAN

Adalah dengan ini diperakui bahawa kontraktor yang dinyatakan di bawah ini telah berdaftar dengan Lembaga mengikut Bahagian VI Akta Lembaga Pembangunan Industri Pembinaan Malaysia 1994. Pendaftaran ini adalah tertakluk kepada syarat-syarat yang telah ditetapkan bersama perakuan ini.

**No. Pendaftaran** : 0120180903-WP016360  
**Nama Kontraktor** : VNK VENTURES SDN. BHD.  
**Alamat Berdaftar** : NO L13A-5 MENARA SENTRAL VISTA JALAN SULTAN ABDUL SAMAD  
BRICKFIELDS  
50470 KUALA LUMPUR  
**Daerah** : KUALA LUMPUR  
**Tarikh Mula Berdaftar** : 04/09/2018

<u>GRED</u>	<u>KATEGORI</u>	<u>PENGGHUSUSAN</u>
G7	B	B04
G7	CE	CE21 CE24
G7	ME	M15

# PPE-SAFETY COMPLIANCE

- VNK has always took tough measures to ensure we comply with the Health & Safety Guidelines on Occupational Safety and Health.
- All work at height riggers requires **WAH CERTIFICATE, CIDB** as a compulsory requirement and will be audited on all safety equipment's.
- All technicians, workers and subcontractors are provided safety training before start of any particular project and required to fill up individual safety-compliance form.

## Head to Toe Protection with PPE

Do you comply with the Personal Protective Equipment at Work Regulations 1992?

### Head

Wear a safety helmet to protect your head against impacts, knocks or vibrations. Never wear a hard hat when working around or near electricity.

### Ears

Wear hearing protection when working in areas with noise levels exceeding 85dB. 100,000 people in the UK complain they suffer hearing loss or other ear conditions caused by their work.

### Hands

Wear hand protection to protect against harmful chemicals and manual handling operations. Different hazards require different glove materials. An estimated 86,000 people suffer with a skin disease caused by their work.

### Clothing

Wear protective clothing to protect against chemicals, solvents, grease and grime. Choose heat-reflective garments and suits through to protective and heavy-duty boiler suits.

### Feet

Wear foot protection to ensure safety of hazardous locations. Protective footwear should be sturdy, including metal toe caps and heat non-slip soles.

### Eyes

Use safety eyewear to protect your eyes when hazardous conditions exist. Always where there are possible chemical splashes, sparks and ultraviolet radiation and compressed air use.

### Respiratory

Wear respiratory equipment to protect against dust, fumes, vapours and other harmful elements. It is estimated that 10,000 people are suffering from respiratory diseases caused by their work.

### Hi-Vis

Wear high visibility clothing to be seen and safe in all conditions. Choose from raincoats and hi-visibility jackets, overalls and trousers.

### Legislation

The main legislation governing PPE at work is the Personal Protective Equipment Regulations 1992. It is a legal responsibility for Employers to ensure that suitable PPE is provided to employees exposed to a risk to their health or safety. A risk assessment may be required to identify the suitability of the PPE to be provided. The employer must also ensure that the PPE is maintained in efficient working order and is good repair. Suitable accommodation must be provided for its safe storage with any contaminated or defective items being segregated.

**For more information contact:**  
 Name: \_\_\_\_\_  
 Phone: \_\_\_\_\_  
 Email: \_\_\_\_\_

## PPE

**84%** of construction workers use safety glasses or goggles  
**50%** of construction workers use safety boots  
**99%** of construction workers use safety helmets  
**25%** of construction workers use safety gloves  
**25%** of construction workers use safety earplugs

CALL TODAY 888.326.9244 | GraphicProducts.com | Duraleaf-1





# OUR CORE SERVICES - TELECOMMUNICATION

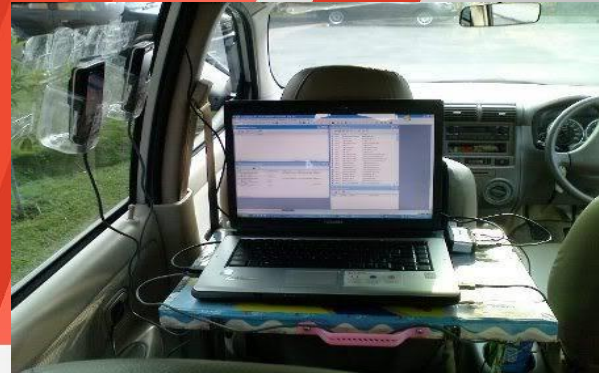
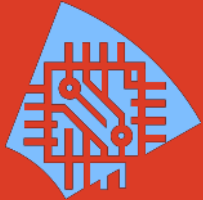
**1. MOBILE NETWORK PLANNING & OPTIMIZATION**

**2. RAN & MW SURVEY & TECHNICAL INSTALLATIO**

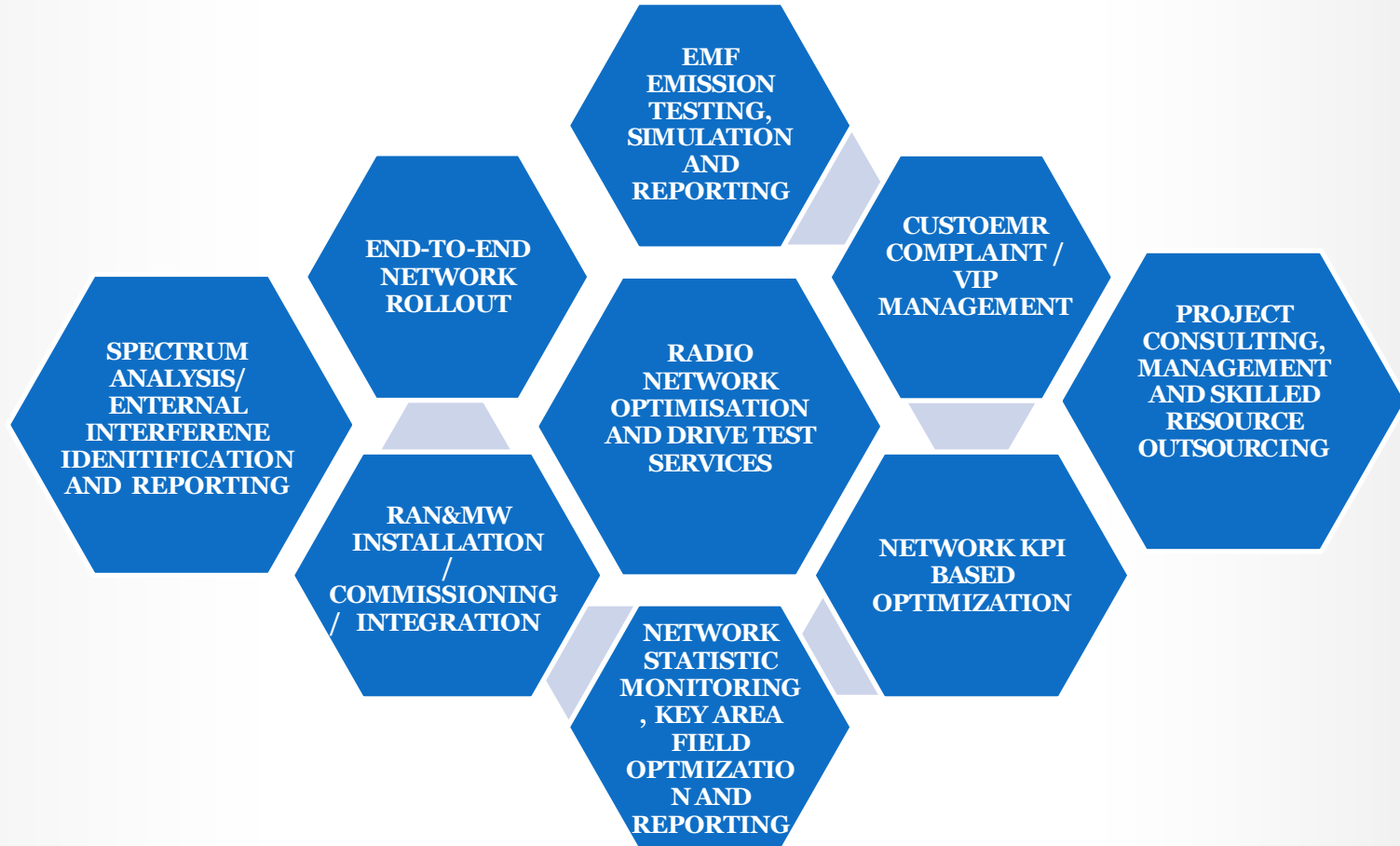
**3. MULTISTRUCTURE(MONOPLE, TOWER, ROOFTOP) - CME SURVEY AND CONSTRUCTION**

**4. END-TO-END FIBRE NETWORK INSTALLATION AND INTEGRATION**

**5. WAREHOUSING & TRANSPORTATION**



# SOLUTIONS & SKILLSETS FOR TELECOMMUNICATION INDUSTRY





“YOUR SUCCESS  
IS OUR  
PRIORITY

